

# wonder

INSPIRING THE LOVE OF LEARNING THROUGH THE POWER OF PLAY

309-433-3444

| [ChildrensDiscoveryMuseum.net](http://ChildrensDiscoveryMuseum.net)

Join us for the 14th annual Doctors in Concert, and evening of live music, great food, cash bar, and silent auction to support the future of the Kids Medical Center Exhibit. Doctors in Concert features the musical talents of local physicians playing classical and contemporary melodies on piano, violin, cello, guitar, or harmonica.

Tickets and sponsorship opportunities are available now at [ChildrensDiscoveryMuseum.net](http://ChildrensDiscoveryMuseum.net)

**Saturday, April 13**

**6:00 pm**

**DoubleTree Hotel and Conference Center, Bloomington**

**Advance Tickets:**

**\$30 adults**

**\$25 students and seniors**

**At the Door Tickets:**

**\$35 per person**

Tickets available at Children's Discovery Museum, Horine's Pianos Plus and Jack Lewis Jewelry

**More on page 13**



Discovery Day Camps offer children an opportunity to engage in STEAM based learning through play. Each day consists of play time in the classroom while students are arriving, themed activities, a 2-hour break in the middle of the day for lunch and museum exploration, more fun activities, snack and play time in the classroom during pick up.

Children may bring a sack lunch or purchase an Avanti's sack lunch for \$5.

**Ages:**  
K-5<sup>th</sup> grade

**Class Time:**  
9:00 a.m. - 5:00 p.m.

**Class Cost:**  
\$40 members  
\$45 non-members

**March 25: Nature Art**

**March 26: Air Heads**

**March 27: Sloppy Science**

**March 28: Energy**

**March 29: Ag Science**



**More on page 4**

# Love and Learn

Love and Learn is designed for children three to twelve months and their parent/caregiver. Create a special bond with your child while experiencing types of play that promote learning and brain development. Each session includes instructor led activities such as songs, quick stories, and finger plays, as well as free exploration time with a variety of activity stations such as tunnels, musical instruments, and soft blocks.

**Cost:**  
**\$6 Member**  
**\$11 Non Members**  
**Additional Adults \$5**  
**at the door/Member Free**

**Ages: 3-12 months**  
**Class Time: 9:30-10:15 a.m.**  
**Class Dates:**  
**Wednesday, March 6: Animals**  
**Wednesday, April 3: Spring**  
**Wednesday, May 1: Colors**

New

**Evening times**  
**for working parents!**  
**Class Time: 5:45-6:30 p.m.**  
**Class Dates:**  
**Thursday, April 18: Spring**  
**Thursday, May 30: Colors**



## Playful Learners

Playful Learners is designed specifically for you and your child to learn and play together. When children play, they are learning a variety of skills all vital to their future success including problem-solving, social-emotional, and communication.

Each class begins with group time where children and adult partners play and interact together. During center based learning time, fine and gross motor skills are developed through play, physical movement, music, and art activities.

**Cost:**  
**Level I: (12-24 months)**  
**\$7 Members/\$12 Non-Members**  
**Level II: (24-36 months)**  
**\$8 Members/\$13 Non-Members**  
**Level III: (3-4 years old)**  
**\$9 Members/\$14 Non-Members**  
**Additional Adults \$5 at the door/**  
**Members Free**



### March: Down on the Farm

**Level I: (12-24 months)**  
**Thursday, March 7, 6:00 - 7:00 p.m.**  
**Friday, March 8, 9:15 - 10:15 a.m.**

**Level II: (24-36 months)**  
**Thursday, March 14, 6:00 - 7:00 p.m.**  
**Friday, March 15, 9:15 - 10:15 a.m.**

**Level III: (3-4 years)**  
**Thursday, March 21, 6:00 - 7:00 p.m.**  
**Friday, March 22, 9:15 - 10:15 a.m.**



### April: Mother Earth

**Level I: (12-24 months)**  
**Thursday, April 4, 6:00 - 7:00 p.m.**  
**Friday, April 5, 9:15 - 10:15 a.m.**

**Level II: (24-36 months)**  
**Thursday, April 11, 6:00 - 7:00 p.m.**  
**Friday, April 12, 9:15 - 10:15 a.m.**

**Level III: (3-4 years)**  
**Thursday, April 25, 6:00 - 7:00 p.m.**  
**Friday, April 26, 9:15 - 10:15 a.m.**



### May: What Makes a Rainbow

**Level I: (12-24 months)**  
**Thursday, May 2, 6:00 - 7:00 p.m.**  
**Friday, May 3, 9:15 - 10:15 a.m.**

**Level II: (24-36 months)**  
**Thursday, May 16, 6:00 - 7:00 p.m.**  
**Friday, May 17, 9:15 - 10:15 a.m.**

**Level III: (3-4 years)**  
**Thursday, May 23, 6:00 - 7:00 p.m.**  
**Friday, May 24, 9:15 - 10:15 a.m.**

# Homeschool Programs

## Early Explorers



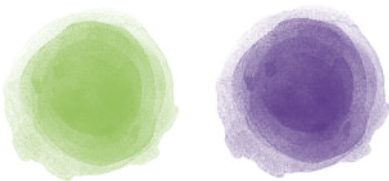
Children will experience their first Museum drop off program! This 90 minute class features story-time with related hands-on STEAM activities.

**Ages: 4-5 years old**

**Class Time: 10:00-11:30 a.m.**

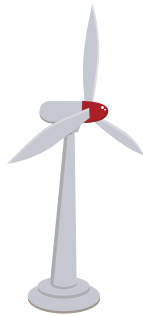
**Class Cost:**  
\$10 Members  
\$15 Non-Members

**Class Dates:**

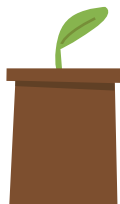


**Saturday, March 9:**  
Watercolor Art

**Saturday, April 13:**  
Wind Power



**Saturday, May 18:**  
Seeds and Sprouts



Experience STEAM based activities and concepts through hands-on experiments, building, and play.

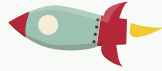
**Cost:**

**2-hour program:**  
\$11 Museum Members  
\$16 Non-Members

**3-hour program**  
\$16 members  
\$21 non-members

**4-hour program**  
\$21 members  
\$26 non-members

## 5-8 YEARS OLD



### March: Projectile Motion

What goes up must come down, right? Join us as we explore projectile motion and the path objects take through the air. We will test out rockets, slingshots, catapults and even try out a life-sized version of Angry Birds.

**Thursday, March 7, 9:30 - 11:30 a.m.**  
**Friday, March 8, 9:30 - 11:30 a.m.**

### March Workshop: Engineering

Join us as we unleash our imagination and expand our thinking with hands-on engineering and design challenges!

**Wednesday, March 20, 12:30 - 3:30 p.m.**  
**Thursday, March 21, 12:30 - 3:30 p.m.**



### April: Bugging Out

Find out what makes a bug truly an insect! Learn all about insect anatomy and special senses that help them to survive.

**Thursday, April 4, 9:30 - 11:30 a.m.**  
**Friday, April 5, 9:30 - 11:30 a.m.**

### May: Flowers & Pollinators



April showers bring May flowers! Learn about the parts of a flower, how they grow and participate in pollination activities.

**Thursday, May 2, 9:30 - 11:30 a.m.**  
**Friday, May 3, 9:30 - 11:30 a.m.**

## 9-13 YEARS OLD

### March: Space

Explore planets, gravity and time!

**Thursday, March 7, 9:30 - 11:30 a.m.**  
**Friday, March 8, 9:30 - 11:30 a.m.**

### March Workshop: Fort Construction

Using simple materials build a fort and then learn how to communicate with others in the classroom from inside your fort.

**Wednesday, March 20, 12:00 - 4:00 p.m.**  
**Thursday, March 21, 12:00 - 4:00 p.m.**

### April: Earth

Celebrate our earth, learn about biospheres, plate tectonics and how it has changed over time.

**Thursday, April 4, 9:30 - 11:30 a.m.**  
**Friday, April 5, 9:30 - 11:30 a.m.**

### May: Math & Design

Explore the beauty of Math as we use geometry, physics and art to make wonderful things.

**Thursday, May 2, 9:30 - 11:30 a.m.**  
**Friday, May 3, 9:30 - 11:30 a.m.**

# Education Programs

**ONLINE REGISTRATION NOW AVAILABLE!**

Visit [childrensdiscoverymuseum.net/205/Online-Registration](http://childrensdiscoverymuseum.net/205/Online-Registration)

Members receive a \$5 discount on all programs. PLEASE NOTE: it may take up to 24 hours for member discounts to be available after you set up your online account.

Payment must accompany registration. Cancellation must be received at least three business days prior to the start of the program to receive refund. See more information about our programs on our website [childrensdiscoverymuseum.net/31/Learning](http://childrensdiscoverymuseum.net/31/Learning)

# SUMMER CAMPS

**Online Summer Registration Opens March 14**

**Over the Phone Summer Registration Opens March 19**

## Pre-School Camps

**Age:** 4-5 years

**Time:** 9:30 - 11:30 a.m.

**Cost:** \$30 members/\$35 non-members

Pre-School Camps are two-day programs that are an excellent way for your child to experience a classroom setting. Children will begin camp with circle time, set classroom expectations as a group, sing a Hello song, and listen to a story to introduce the day's topic. Camp then features theme based, structured hands-on activities, music and movement, and ends with center-based learning including dramatic play, engineering, art explorations, puzzles, and games.

## June: Rescue Heroes

Join us as we read *Paw Patrol-Pups to the Rescue* and *Paw Patrol-Ice Team* and then test your skills to complete rescue challenges just like the pups and learn about community helpers!

**Monday, June 17 & Tuesday, June 18**

## July: Exploring Outer Space

We will explore and learn about outer space by reading *Curious George Discovers Space* and *Curious George Discovers the Stars*, both by H.A. Rey. We will then do hands-on experimentation that relates to the solar system, gravity, and constellations!

**Monday, July 22 & Tuesday, July 23**

## August: Don't Let the Pigeon...

The first day, we will read *Don't Let the Pigeon Drive the Bus* by Mo Willems and then we will build a vehicle that would be safe for the pigeon to drive. The second day, we will read *The Pigeon Needs a Bath* by Mo Willems and we will learn about sinking and floating and build a floating device that would make Pigeon want to take a bath!

**Monday, August 12 & Tuesday, August 13**



## Kinder Camps

**Age:** Entering Kindergarten (5-6 years)

**Time:** 9:00 - 12:00 p.m.

**Cost:** \$75 members/\$85 non-members

Kinder Camps are an excellent opportunity for children preparing to enter Kindergarten. Children will begin camp with circle time, set classroom expectations as a group, sing a Hello song, and listen to a story to introduce the day's topic. Camp then features theme based, structured hands-on activities, music and movement, and center-based learning including dramatic play, engineering, art explorations, puzzles, and games. This camp also includes a small snack.

## Magic School Bus Camp

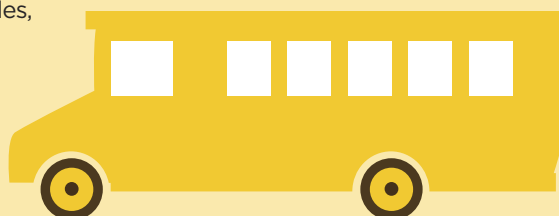
Come on aboard the Magic School Bus! Each day of camp we will be reading a different *Magic School Bus* Story and then participating in hands-on activities related to that day's story. Some of the stories that we will be exploring include: *The Magic School Bus-On the Ocean Floor*, *The Magic School Bus Plants a Seed*, and *The Magic School Bus in the Haunted Museum!*

**Monday, June 10 - Friday, June 14**

## Cardboard Creations

We will be creating various projects throughout the week that all involve cardboard. Participants will explore their creativity as we use science, technology, engineering, art, and math while we create our projects! On the last day of camp, families will be invited to see everyone's creations as we transform our classroom into a mini gallery.

**Monday, August 5 - Friday, August 9**



# SUMMER CAMPS

## Camp Discovery

Cost includes camp, snack and materials. Payment must accompany registration. Registration deadline 1-week prior to camp. Camps fill quickly so register early. 72-hour cancellation required for refund.

Bring a packed lunch or pre-order an Avanti's lunch for \$5.  
All lunches must be ordered when registering.



## Outdoor Explorers

Grades: entering 1<sup>st</sup> – 6<sup>th</sup>

Time: 8:30 a.m. – 4:30 p.m.

Cost: \$140 museum members/  
\$160 non-members

Dates: Monday, June 3 – Monday, June 10

It's time to get outside! Campers will have an opportunity to experience, discover and explore the great outdoors. We'll focus on many nature related topics through hands-on investigations including insects, plants and more. We'll keep journals of what we discover and use nature to make art.



## Upcycled Art: Taking the Old and Making it New

Grades: entering 1<sup>st</sup> – 6<sup>th</sup>

Time: 8:30 a.m. – 4:30 p.m.

Cost: \$160 museum members/  
\$180 non-members

Fee includes \$20 material fee for antique shopping

Dates: Monday, June 24 – Friday, June 28

Have you ever heard the phrase "One person's junk is another person's treasure?" During this week of camp, we will be taking "junk" and making new and exciting art with it. Use your creativity to inspire others using found objects, old items and "junk." We will take a field trip to an antique mall to find some treasured junk to make fabulous art and on Friday University Galleries will host a pop-up expedition of our students' art!

## Extreme Challenge Camp

Grades: entering 1<sup>st</sup> – 6<sup>th</sup>

Time: 8:30 a.m. – 4:30 p.m.

Cost: \$140 museum members/  
\$160 non-members

Dates: Monday, July 8 – Friday, July 12

Have fun exercising your brain and body with a variety of challenges. These challenges are designed to promote 21<sup>st</sup> Century skills such as teamwork, problem-solving, and test the campers' endurance and willpower. Winning challenges allow teams to gain points and become the extreme challenge champions. Are you up to the challenge?

## STEAM with CeMaST

Grades: entering 1<sup>st</sup> – 6<sup>th</sup>

Time: 8:30 a.m. – 4:30 p.m.

Cost: \$140 museum members/  
\$160 non-members

Dates: Monday, July 29 – Friday, August 2

Explore new activities designed by staff from ISU's Center for Math, Science and Technology (CeMaST) for a week filled with amazing activities to spark your imagination and curiosity. Use STEAM (science, technology, engineering, art, and math) to design and create your own projects.

## Physics of Aerodynamics!

Ever wonder why a heavy airplane can fly high in the air? Or how a baseball pitcher can throw a curve ball? How do engineers design rockets to fly into space? Join us this week camp to explore aerodynamics, the science of flight. The Children's Discovery Museum and ISU Physics Club will engage you throughout the week with hands-on demonstrations and activities that will make your imagination soar, and we will even visit the Prairie Aviation Museum!

Grades: entering 4<sup>th</sup> – 8<sup>th</sup>

Time: 9:00 a.m. to Noon or  
1:00 – 4:00 p.m.

Cost: \$145 early registration by May 31/  
\$155 after May 31 (includes \$20 to cover field trip fees)

Dates: Monday, July 15 – Friday, July 19

Location: Heartland Community College

To register, call Heartland Community College at (309)268-8160 beginning March 1. Or you can register via the web at [www.heartland.edu/communityEd](http://www.heartland.edu/communityEd)

Scholarships available visit [ChildrensDiscoveryMuseum.net/31/learning](http://ChildrensDiscoveryMuseum.net/31/learning) or contact Jenny Raisbeck at [jraisbeck@normal.org](mailto:jraisbeck@normal.org) for more information.

To support camp scholarships contact Beth Whisman at (309) 433-3447 or [bwhisman@normal.org](mailto:bwhisman@normal.org)

# Birthday Parties

Make it the most memorable party ever at the Children's Discovery Museum! Fun, easy and all the exhibits your kids (and grown-ups) love to play in.

## What's included:

- 21 admissions (adults and children)
- 90 minutes in the Party Room
- Personalized Birthday Poster
- Special gift for the Birthday child
- CDM Staff "Birthday Buddy" ready to assist/clean up
- Unlimited Museum Exploration
- Families are welcome to bring their own food, drink, and decorations

## Cost:

\$155 Members/\$175 Non-Members

\$50 non-refundable deposit required for reservation

Memberships not valid for birthday party admission

\$7/additional guest

\$15/additional birthday child

For best availability book at least 3 weeks in advance.

Contact: Clare Dhom at (309)433-3455 or [cdhom@normal.org](mailto:cdhom@normal.org)



*an initiative of the*  
Institute of Museum and Library Services

At the Children's Discovery Museum in Normal, any Illinois family that qualifies for nutrition assistance and is in possession of an EBT card (Link WIC, Snap) can simply present your benefit card with a valid identification and receive an annual *Museums for All* pass.

Each visit, present your *Museums for All* pass at our front desk and receive \$3 admission for up to six people. (Children under 2 years old are free.) Plus receive discounts on education programming and events and access to Member Mondays.

Visit [ChildrensDiscoveryMuseum.net](http://ChildrensDiscoveryMuseum.net) for more information.

## Free at the Normal Theater!

### “How to be a Superhero”

#### Prairie Fire Theatre – Children's Opera

What if the very things we get teased for can actually make us strong? That sure would come in handy for Delaney, Will, and Maddie, charter members of the Nerd Club. Not only do they get teased—a lot—but they also appear to be the last remaining hope to defeat the evil Dream Snatcher. Right now the Nerd Club is hiding in an abandoned Diner, frantically recording their hopes and dreams into journals in order to keep them safe. Why? The evil Dream Snatcher is fast approaching. He goes around stealing dreams and feeding them into his diabolical Mash Box where they are pulverized into Gray Spray. One puff of Gray Spray and even memories of dreams are gone forever. It would take Super Hero strength to defeat the Dream Snatcher but the Nerd Club is equipped with only their rather geeky skills and some kitchen gadgets left behind in the Diner. Could that possibly be enough? Even now the Dream Snatcher is loading the towns' dreams into his Mash Box, which he'll turn on at midnight. It's now or never, Nerd Club. Do you hear the clock? It's ticking.

**Date: Wednesday, May 22**

**Showtimes: 10 a.m. and 11:30 a.m.**

**Cost: Free**

**Concessions available**



# studio

Our art studio follows a TAB (Teaching for Artistic Behavior) model. This Choice-based, self-guided approach offers five individual media centers from which to explore. Each of these centers follows a monthly theme with implementation of STEAM (Science, Technology, Engineering, Arts, and Math). All ages and stages are welcome!

## Art Studio Free Family Programming

### Select Saturdays

10:00 a.m.–1:00 p.m.

Join us on select Saturdays from 10:00- 1:00 p.m. for FREE programming. Activities will focus on a specific media/process, art movement/artist, or STEAM topic.

**March: Growing and Farming**

**April: Earth Art**

**May: Art and Money**

## Family Paint Night

Make a date with your family at the museum for a fun-filled night of painting! Each participant will create a step-by-step masterpiece on a canvas while learning about artistic techniques and processes.

**Ages: 1 parent and 1 child age 5+**

**Date: Thursday, March 21**

**Time: 6:00 – 7:30 p.m.**

**Cost:**

**\$30 Member**

**\$35 Non-Member**



Free with pre-registration

## Art Around You: Exploring Contemporary Art in the Community

Visit University Galleries and participate in a scavenger hunt to help you discover the style and media used to create works of art. Then return to the museum where you will explore these styles and media as you create your own art.

**Age: 7-10 years old**

**Dates:**

**Saturday, March 16**

**Saturday, April 20**

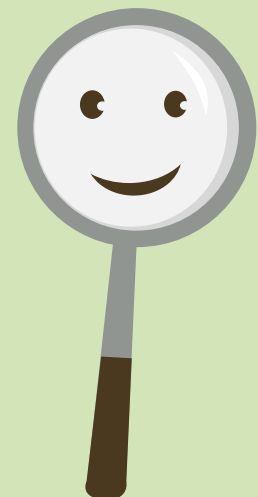
**Saturday, May 11**

**Time:**

**1:00–4:00 p.m.**

**Cost: Free with pre-registration\***

\*Thanks to a generous grant from the IPCF Mirza Arts and Cultural Grant



Free with pre-registration

## BCAI Partner Programs

New

BCAI School of Arts is a local organization focused on dance, martial arts, and self-expression. Please join us for some fun family time as we explore these areas with this new program.

### Family Self-Defense Workshop

Join us as we learn the basics of self-defense. This 2-part program will flex your physical, mental and emotional muscles as you learn to fall safely, learn and express your physical boundaries, and learn much more. When you participate in both sessions you will receive a free month of martial arts training at Combat Martial Arts.

**Age:** Children ages 6 and up and their adult

**Dates:**  
Sunday, April 7  
Sunday, April 14

**Time:**  
3:00-4:30 p.m.

**Cost:** Free with pre-registration

# BOOKS ON THE GO

New

 **NORMAL PUBLIC LIBRARY**

## Free with Museum Admission

Stop by the Children's Discovery Museum for a Books on the Go Story Hour with the Normal Public Library. Enjoy a fun story time and the opportunity to sign up for a library card and check out books.

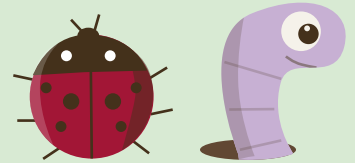
### Select Thursdays 11:30 a.m. - 12:30 p.m.

#### Thursday, March 7

*Rosie Revere, Engineer* by Andrea Beaty  
*After the Fall* by Dan Santat

#### Thursday, April 4

*Bugs Galore* by Peter Stein  
*I Love Bugs* by Emma Dodd



#### Thursday, May 2

*Flowers Are Calling* by Rita Gray  
*Are You a Bee* by Judy Allen



Make Music Normal returns in 2019 with a new two-day format to better showcase local and regional acts, taking place on Friday, June 21 from 5:00-10:00pm and Saturday, June 22 from 12:00-10:00pm. With stages all over Uptown Normal and participatory experiences designed to let guests of all ages and skill levels engage with music, this free-to-attend festival is not to be missed.

To indicate your interest in performing at Make Music Normal 2019 please visit [www.uptownnormal.com](http://www.uptownnormal.com).

presented by

**CEFCU**<sup>®</sup>



# INNOVATION STATION Lab and MakerSpace

**MakerSpace**  
**Thursday-Friday**  
**10:00 a.m.-12:00 p.m.**

**Saturday-Sunday**  
**1:00-4:00 p.m.**

**Instructor-led**  
**STEAM activities**  
**Saturdays**  
**10:00 a.m.-12:00 p.m.**

The Innovation Station is a place where children and families engage in STEAM (Science, Technology, Engineering, Art and Math) where families create, discover, investigate and invent. The station gives everyone a chance to apply problem-solving skills, test and revise their ideas, collaborate, and have fun. Visit us at [cdmmakerspace.weebly.com](http://cdmmakerspace.weebly.com) for more information!

## STEAM Activity Topics

**National Bubble  
Week & National  
Agriculture Week**  
March



**National Earth Science  
& Environmental  
Education Week &  
National Look up  
at the Sky Day**  
April

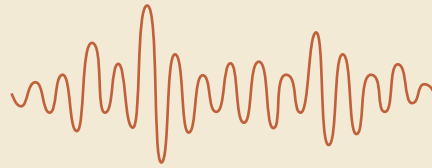


**National Be a Millionaire  
Day & National  
Composting Day**  
May



## Physics Days

**Select Thursdays**  
**10:00 a.m.-12:00 p.m.**



ISU Faculty, Dr. Jay Ansher and students will provide hands-on demonstrations, experiments and more on new topics each month!

**Motion**  
**Thursday, March 21**

From Aristotle to Galileo, many famous scientists had their ideas about motion. Why does it occur, and how do we measure it? Join us as the ISU Physics Club presents some hands-on demonstrations of all kinds of motion: fast, slow, up and down, back and forth, straight lines, and in circles!

**Energy**  
**Thursday, April 11**

Energy is one of the central ideas in science and has many different forms. Join ISU's Physics Club and discover how the Sun creates its heat and light, how energy is used in our bodies, and why energy does not really disappear when it's "gone".



**Astronomy**  
**Thursday, May 2**

The Spring sky is filled with stars, planets, and other fascinating objects. Join the ISU Physics Club as they explore astronomy with hands-on demonstrations, telescopes, and weather permitting, a chance to view the Moon or Sun through a telescope.

Visit [ChildrensDiscoveryMuseum.net](http://ChildrensDiscoveryMuseum.net) for more program details.



# Foundation News

The Children's Discovery Museum works hard to educate and entertain new generations of learners. But, we can't do it alone! Our members and donors help us share our mission of inspiring the love of learning through the power of play to as many children as possible.

How can you help? Donate today at [childrensdiscoverymuseum.net](http://childrensdiscoverymuseum.net) and

support our scholarship program for students to attend field trips and learning labs. You can sponsor a pushcart in our annual derby or buy tickets for "Doctors in Concert" every April. Attend a Family Fun Night or volunteer during the Medici Craft Beer and Jazz Festival that generously shares proceeds each summer.

The successful partnership with the

Town of Normal and CDM Foundation is responsible for the high quality experience visitors find inside our doors. The Town covers overhead costs for our award-winning building and professional staff. The Foundation is responsible for raising funds for exhibits through the CDM Pushcart Derby and other important events and programs.

## CDM Foundation Board

Gina Mandros, Chair  
Ben Harmon, Vice Chair  
Marlene Dietz, Secretary  
Mark Jontry, Treasurer

Pat Bane  
Carla Barnes  
Caroline Halperin

Tracie Henry  
Terry Ogunleye  
Theresa Prosser

Paul Scharnett  
Mitch Stebel  
Rob Widmer

## Thanks to our Donors

November 1, 2018 – January 31, 2019

Anonymous  
Monica Adams  
AFNI  
Amazon Smile  
Frank Annarino  
Avanti's Italian Restaurant  
Christopher Ayers  
Roger Baldwin  
Sheri and Patrick Bane  
Roger Bannister and Lisa Tranel  
Shelleigh and Kevin Birlingmair  
Kristen Bolton  
Margaret Burton  
Mary and Hank Campbell  
Rachel and Nathan Carpenter  
Jeffrey Caughron  
CEFCU  
Jessica and Jason Chambers  
Linda and John Chizmar  
Grace and David Chow  
Shane Combs  
David Combs  
Jan and John Couillard  
Sandra Coy  
Carol DeLorica  
Zach Dietmeier  
Marlene and Larry Dietz  
Drew Dockery  
Kelly Duckert  
Evan Ebert  
Thomas Enright  
Farnsworth Group

Susan and Rett Felix  
Marsha Fogarty  
Deanna Frautschi  
Robert Geraty  
Kendall Hammel  
Shelly Hanover  
Ben Harmon  
Kelli and Brad Harmon  
Heartland Bank and Trust  
Barb and Bob Heneghan  
Amy and Justin Holschbach  
Susan and Charles Hurliman  
Mary Lou and Lynn Hutson  
Barbara and Arnold Insel  
Invenergy  
Amy and Randy Jacobs  
Mia Jazo-Harris  
Hannah Johnson  
Sammi Kern  
Ruth and Gary Kuipers  
James Messer  
Alex Miller  
Tammy and Joe Monk  
Erin Muckey  
Myers Family Charitable Trust  
Debra Nissen  
Karen Nobis  
Velma Nordine  
Terry and Dele Ogunleye  
Linda and John Olson  
Parker Kemp Foundation  
Nancy and Jeff Porter  
Jenny and Kevin Raisbeck

Pamela and Jay Reece  
Carole and Jerry Ringer  
Katie and Dave Rosseutcher  
Stephen Rudisill  
Susan Schaefer Beigier  
Anne and Paul Scharnett  
Erin Schmitt  
Alan Sender and Beth Robb  
Carol and Rodney Smithson  
Irena Sorrells  
State Farm Companies Foundation  
Bill Sulaski  
Sulaski and Webb  
Paula Sweeney  
Talitha Templeton  
Nick Thacker  
The Vein Specialist  
Michael Thompson  
Marie and Matthew Vose  
Tricia and Geoff Walker  
Christy Ward  
Rachel and James Wayne  
Ferrell Wellman  
Kim Wells  
Cathy and Dennis Wentworth  
Dora Lee Whisman  
Rob Widmer  
Mark Wilcox  
Kris Williams  
Heather Young  
Jane and Tim Zelgert



did you know?

In March the  
Museum will  
celebrate 25  
years of  
playing in our  
community!

Watch for upcoming 25<sup>th</sup>  
anniversary celebrations!

The Children's Discovery Museum Foundation is a 501(c)3 nonprofit organization created to support the mission and vision of the Children's Discovery Museum, to raise and expend funds for the benefit of the Museum and to advocate on behalf of the Museum in the community at large.

EVENTS

# Jammies & Jingles

Friday, December 7



That's some list kid!



Sweet Moments with Santa



Making Reindeer Crafts in jammies



## Happy Noon Year's Eve Party

Monday, December 31



3,2,1 Happy Noon Year!



James is ready to party!



Making party crowns

# Support Our Mission

Here is my gift to support new exhibits and programs at the Children's Discovery Museum!

Name for recognition purposes: \_\_\_\_\_

Address: \_\_\_\_\_ City: \_\_\_\_\_ St: \_\_\_\_\_ Zip: \_\_\_\_\_

Phone: \_\_\_\_\_ Email: \_\_\_\_\_ Signature: \_\_\_\_\_

Make your gift online at [ChildrensDiscoveryMuseum.net/163/Inspired-Giving](http://ChildrensDiscoveryMuseum.net/163/Inspired-Giving)

Please contact me about:

- Event Sponsorship
- Exhibit Sponsorship
- Funding Camp Scholarships
- Making A Legacy Gift in my will

Please detach and return to:  
Children's Discovery Museum  
101 E. Beaufort Street, Normal, IL 61761

# Early Learners explore STEAM principles in ImagineAir

By Erin Wiese-Reichert, Early Childhood Educator



Grand Opening of ImagineAir Exhibit

Friday, November 27



Mayor Chris Koos and visitors cut the ribbon

Will it sink or float?



Testing the Bernoulli principle

Did you know that STEAM (science, technology, engineering, arts, and math) education is not only important for our school aged children, but also vital for our early learners in the 0-5 age range? STEAM education gives our youngest learners the opportunity to investigate, discover, explore, and solve problems in the world that surrounds them! You may be wondering as a caregiver, “How can I teach my little one STEAM concepts?” The answer is simple, it is through hands-on play! Children are naturally curious, and it is through play that they learn about the world around them and how and why things work the way they do. You are already introducing your child to STEAM concepts through

various every day experiences and by answering or investigating the many questions that they ask each day!

If you have not yet had the opportunity, our newest exhibit, ImagineAir, is a perfect opportunity to practice STEAM learning! Your early learners are experiencing the STEAM concept of cause and effect as they explore this exhibit. For example, with the sink/float tubes, children push a fan under each tube to see what happens to the items inside the tube. Some items float to the top of the tube, while others remain towards the bottom. This specific component of the exhibit offers the caregiver the opportunity to ask some questions such as, “What do

you think will happen to the items in this tube when you push the fan underneath of it?” or “Why do you think the items in this tube went to the top and the items in this tube stayed near the bottom?” Asking questions like these furthers the learning and deepens the child’s critical thinking skills. Not to mention, asking questions like these and having discussion about what is occurring are steps in the scientific method!

Come and enjoy this exhibit with your early learner and if you want help asking critical questions find a Museum staff member to play with you!

**“How can I teach my little one STEAM concepts?”  
The answer is simple, it is through hands-on play!**



# Doctors in Concert annual check-up sees healthy future for Children’s Discovery Museum medical exhibit

The Children’s Discovery Museum’s first-floor is hard to imagine without the Kid’s Medical Center where families stop in for a fun dental check-up, kids don lab coats to practice their surgery skills, and young nurses care for newborns in the nursery.

Keeping the Kid’s Medical Exhibit healthy and fully operational has been a priority for local physicians and healthcare providers since 2005. That’s when a committee of volunteers started Doctors in Concert, a unique event that showcases their musical talents in order to raise funds to maintain one of the museum’s original exhibits.

Doctors in Concert benefits the Children’s Discovery Museum Foundation, a 501(c)3 nonprofit organization that is solely responsible for funding the museum’s exhibits and scholarships. The concert has raised enough money over the years to extend the exhibit well beyond its original 10-year life expectancy.

“The success of this collaboration can be measured in the almost 2 million visitors who have been able to play and learn with the same high-quality experience since the exhibit opened in 2004,” said Beth Whisman, Executive Director of the Children’s Discovery Museum.

Physicians perform classical and contemporary melodies on piano, violin, cello, guitar, and harmonica. The event itself has grown over the years, from a traditional recital in a beautiful church to the current cabaret-style concert with appetizers, drinks, and a performance in the round at the DoubleTree Hotel and Conference Center.

“One of the most rewarding aspects of Doctors in Concert is that it gives physicians a personal goal to perfect pieces of music that keep their joy of music alive and well,” said Deb Grieco, coordinator and co-founder of the event.

“In some cases, it brings doctors back to the instrument of their youth and gives them an avenue of expression and release that had been neglected.”

This year’s Doctors in Concert will be held at 6:00 p.m. on Saturday, April 13 at the DoubleTree Hotel and Conference Center in Bloomington. Proceeds from the 14th annual concert will go toward a future medical exhibit. The objectives learned through the current Kid’s Medical Center have remained relevant, but it’s time to transform this beloved exhibit to better reflect new approaches to medicine, health, and wellness.

Advance tickets are \$30 per person (\$25 for seniors and students) and can be purchased online at [ChildrensDiscoveryMuseum.net](http://ChildrensDiscoveryMuseum.net) or in person at the Horine’s Pianos Plus, Jack Lewis Fine Jewelry and the Children’s Discovery Museum. Tickets will be available at the door for \$35 per person. Individuals or businesses interested in sponsoring this event should contact Amy Pitzer at [apitzer@normal.org](mailto:apitzer@normal.org) or (309) 433-3448. Multiple packages are available, and donations are tax deductible.

More information can be found at [www.childrensdiscoverymuseum.net](http://www.childrensdiscoverymuseum.net).



Attendees enjoy the cocktail reception prior to the start of the concert.



Dr. Joe Santiago performing on piano.



Dr. Darrell Looney performing on violin.

# Museum Membership



## **Basic Family Membership (\$95)**

Unlimited general admission for two adults and all children under 18 living in the same household.

With additional discounts on programs, birthday parties, and Discover More Store.

## **PLUS Family Membership (\$130)**

Basic Member Benefits, PLUS...

One free guest admission each visit to CDM

FREE or 1/2 price admission at over 500 participating ACM and ASTC Museums

## **Grandparent Membership (\$125)**

Unlimited general admission for grandparents and their grandchildren.

Basic membership benefits, PLUS...

One free guest admission each visit to CDM

FREE or 1/2 price admission at over 500 participating ACM and ASTC Museums

For more information contact Shelly Hanover  
(309) 433-3453 or shanover@normal.org

**Don't forget-PLUS and Grandparent Members receive free or 1/2 price admission to over 500 museum's across the country.**

**Show your Membership card wherever you are headed for Spring Break; Orlando, Chicago, St. Louis, Decatur, Peoria and other cities for great discounts and hands-on fun!**

**Visit [ChildrensDiscoveryMuseum.net](http://ChildrensDiscoveryMuseum.net) for a complete listing of participating museums.**

## **Membership Cards**

Please present your Museum Membership card to the front desk staff to receive your free admission benefits, discounts in the Discover More Store and savings on birthday parties and programs. Members without cards may be charged a \$5 replacement fee.



## **SENSORY BAGS AVAILABLE**

The Children's Discovery Museum is proud to announce we now have "Sensory Bags" available for check out at the front desk. Generously provided by Autism McLean, these bags include noise reduction headphones, communication tools, sunglasses, and therapeutic toys. If your child could benefit from using these items during their time at the museum, please ask the front desk for a Sensory Bag during your next visit. Check our website for upcoming sensory friendly events!

# Summer Youth Volunteer Program

The Children's Discovery Museum is looking for energetic and outgoing teens (ages 13-17). Youth will spend their summer break assisting families as they explore the museum, leading free floor programming and helping with special events, all while gaining valuable job skills.

All volunteers must complete a 90-minute orientation to begin.

Visit our website at [ChildrensDiscoveryMuseum.net](http://ChildrensDiscoveryMuseum.net) for schedule of orientation dates and times.



## GRANT FUNDING

# Women to Women backs power of play

We are pleased to announce the receipt of the Women to Women Giving Circle Grant funding Growing STEAM Potential Through Play at the Children's Home + Aid, Scott Early Learning Center in 2019. The Children's Discovery Museum has been looking for ways to expand STEAM Early Learning opportunities to all members of our community. This year we applied to the Women to Women Giving Circle Grant. This grant is for community organizations serving girls in our community aged 0-5 and their support networks. The Growing STEAM Potential Through Play program will provide a multifaceted program to

the 50 children served in the Scott Early Learning Center's preschool program.

Each classroom will receive a STEAM based Museum In Motion program in their classroom per semester. During this program Museum instructors will read a story based on the theme of the program. The students will then participate in hands on activities and receive take home activity kits, enabling them to be the teachers at home. Teachers will also receive curriculum kits to support continued STEAM learning between our visits.

The students and staff at the Center will also receive a field trip to the museum between our trips to their classroom to

continue to practice learning through play. To make sure that the families benefit from the program as much as the students we will visit the Center once per semester during their onsite family event and provide continuing education activities for families to do both during the event and give ideas for activities at home. Families will also be invited to a private family fun night at the museum where they all can play together and bond. They will also receive dinner while here!

All of this would not be possible without the generous grant from Women to Women Giving Circle.

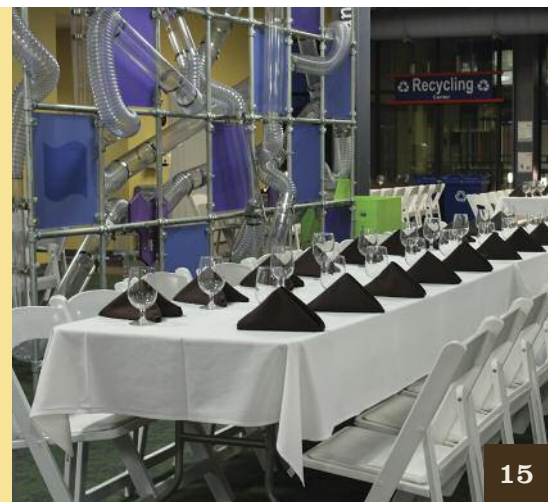
*Women to Women*  
GIVING CIRCLE



# Museum Rentals

The Museum is the perfect place to host large family gatherings, corporate events, and special parties. With spaces to accommodate 10 - 1,000 people, we offer options for groups and budgets of every size. From rentals of the entire museum to private room rentals, our three floors will provide the

perfect location for your next event. Catering and bar service options available upon request. Non-profit rates are also available. For more information or to make your reservation call 309-433-3455 or email Clare at [cdhom@normal.org](mailto:cdhom@normal.org).





Town of Normal  
Children's Discovery  
Museum Foundation  
101 E. Beaufort Street  
Normal, Illinois 61761

## MUSEUM HOURS

**Monday:** 9:00 a.m.–Noon (Members Only)

**Tuesday:** 9:00 a.m.–5:00 p.m.

**Wednesday:** 9:00 a.m.–5:00 p.m.

**Thursday:** 9:00 a.m.–8:00 p.m.

**Friday:** 9:00 a.m.–5:00 p.m.

**Saturday:** 9:00 a.m.–5:00 p.m.

**Sunday:** 1:00–5:00 p.m.

### SPECIAL HOURS:

Sunday, April 21 Closed

Monday, May 27 Closed

Phone: 309-433-3444

Web: [ChildrensDiscoveryMuseum.net](http://ChildrensDiscoveryMuseum.net)

Admission is \$7 per person ages 2 and above

Museums for All \$3 per person

Members: Free



Search for "Children's  
Discovery Museum Normal"



Search for @DiscoveryMuseum

[YouTube.com/ChildrensDiscoveryMuseumNormalIL](https://www.youtube.com/ChildrensDiscoveryMuseumNormalIL)

## children's discovery museum **PUSHCART DERBY**

**Saturday, June 15**  
**8:00 a.m.–1:00 p.m.**

Youth 3<sup>rd</sup>–8<sup>th</sup> grade

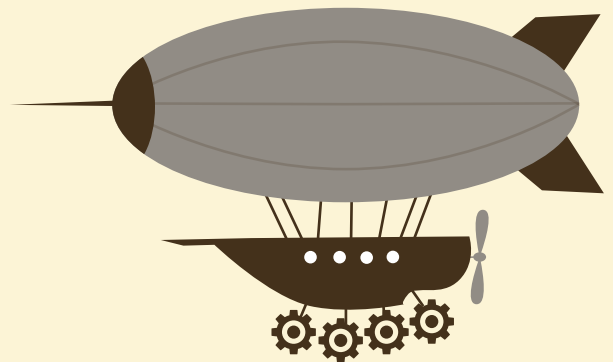
Cost: \$20/participant

Teams of 7-10 youth create their own pushcart during a 2-hour workshop led by ISU CeMaST students and museum educators, then compete in the 3<sup>rd</sup> annual Pushcart Derby! All materials provided, each participant receives a free T-shirt and lunch!



**SAVE  
THE  
DATE**

**REGISTRATION BEGINS APRIL 1**



## COGS AND CORSETS

### A CENTRAL ILLINOIS STEAMPUNK HAPPENING

Come to the festival and participate in activities put on by the Children's Discovery Museum and the McLean County Museum of History to learn about the STEAM (science, technology, engineering, arts, and math) of Steampunk.

**Saturday, June 8**

**Downtown Bloomington**

**10:00 a.m.–Noon & 1:30–3:30 p.m.**

For more information visit: [CogsandCorsetsIL.com](http://CogsandCorsetsIL.com)