

wonder

INSPIRING THE LOVE OF LEARNING THROUGH THE POWER OF PLAY

309-433-3444

| ChildrensDiscoveryMuseum.net

Jammies & Jingles

Friday, December 7
6:00 - 8:00 p.m.

It's time to get into the holiday spirit and celebrate the season with the CDM! The whole family will enjoy a visit with Santa and fun holiday games, all while wearing your pajamas. You won't want to miss this favorite family event!

Children must be accompanied by a paying adult.

Cost: \$5 Member
\$12 Non-Member

Register at ChildrensDiscoveryMuseum.net for express entry.

Express Entry allows you to skip the line and head into the party!

Enter through the Museum Store doors.

Now Open! ImagineAir

Make plans to visit the newly opened reimagined ImagineAir exhibit.

Visitors will be introduced to concepts related to wind energy, aerodynamics, and fluid dynamics through fun new and updated experiences.

- New AirMaze
- Sink or Float
- Wind Turbine - building and testing
- Air Cannon
- Bernouli and Venturi table

ImagineAir is funded through an Illinois Public Museum Capital Grant administered through the Illinois Department of Natural Resources, with additional support from Invenergy, the Children's Discovery Museum Foundation, and EDP Renewables.



Love and Learn

Love and Learn is designed for children three to twelve months and their parent/caregiver. Create a special bond with your child while experiencing types of play that promote learning and brain development. Each session includes instructor led activities such as songs, quick stories, and finger plays, as well as free exploration time with a variety of activity stations such as tunnels, musical instruments, and soft blocks.

Cost:
\$6 Member
\$11 Non Member
Additional Adults \$5
at the door

Ages: 3-12 months
Class Time: 9:30-10:15 a.m.

Class Dates:
Wednesday, December 5:
Winter

Wednesday, January 9:
Shapes

Wednesday, February 6:
Nursery Rhymes

Evening times
for working parents!

Class Time: 5:45-6:30 p.m.

Class Dates:
Thursday, January 31: Shapes

Thursday, February 28:
Nursery Rhymes



Playful Learners

Playful Learners is designed specifically for you and your child to learn and play together. When children play, they are learning a variety of skills all vital to their future success including problem-solving, social-emotional, and communication.

Each class begins with group time where children and adult partners play and interact together. During center based learning time, fine and gross motor skills are developed through play, physical movement, music, and art activities.

Cost:
Level I: (12-24 months)
\$7 Members/\$12 Non-Members
Level II: (24-36 months)
\$8 Members/\$13 Non-Members
Level III: (3-4 years old)
\$9 Members/\$14 Non-Members
Additional Adults \$5 at the door/
Members Free

December: Dashing through the Snow

Level I: (12-24 months)
Thursday, December 6, 6:00-7:00 p.m.
Friday, December 7, 9:00-10:00 a.m.

Level II: (24-36 months)
Thursday, December 13, 6:00-7:00 p.m.
Friday, December 14, 9:00-10:00 a.m.

Level III: (3-4 years)
Thursday, December 20, 6:00-7:00 p.m.
Friday, December 21, 9:00-10:00 a.m.

January: Furry Friends



Level I: (12-24 months)
Thursday, January 10, 6:00-7:00 p.m.
Friday, January 11, 9:15-10:15 a.m.*

Level II: (24-36 months)
Thursday, January 17, 6:00-7:00 p.m.
Friday, January 18, 9:15-10:15 a.m.*

Level III: (3-4 years)
Thursday, January 24, 6:00-7:00 p.m.
Friday, January 25, 9:15-10:15 a.m.*

February: Monster Hearts



Level I: (12-24 months)
Thursday, February 7, 6:00-7:00 p.m.
Friday, February 8, 9:15-10:15 a.m.*

Level II: (24-36 months)
Thursday, February 14, 6:00-7:00 p.m.
Friday, February 15, 9:15-10:15 a.m.*

Level III: (3-4 years)
Thursday, February 21, 6:00-7:00 p.m.
Friday, February 22, 9:15-10:15 a.m.*

*Note: New class time beginning in January

Homeschool Programs

Early Explorers



Children will experience their first Museum drop off program! This 90 minute class features story-time with related hands-on STEAM activities.

Ages: 4-5 years old

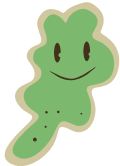
Class Time: 10:00-11:30 a.m.

Class Cost:
\$10 Members
\$15 Non-Members

Class Dates:



Saturday, December 8:
Gift Making



Saturday, January 19:
Ooey, Gooley, Slime



Saturday, February 16:
Candy Science

Experience STEAM based activities and concepts through hands-on experiments, building, and play.

Cost:

2-hour program:
\$11 Museum Members
\$16 Non-Members

5-8 YEARS OLD

December: Electricity

We will learn about the two different types of electricity and investigate how to set up circuits that make a light bulb light up!

Thursday, December 6, 9:30-11:30 a.m.
Friday, December 7, 9:30-11:30 a.m.

January: Winter Art

Let's beat the winter blues by creating some amazing winter inspired art!

Thursday, January 10, 9:30-11:30 a.m.
Friday, January 11, 9:30-11:30 a.m.

February: Beaks, Wings and Other Things

Investigate why bird beaks are shaped differently and how feathers set them apart from other animals. We'll even find out what it is like to build your own bird's nest!



Thursday, February 7, 9:30-11:30 a.m.
Friday, February 8, 9:30-11:30 a.m.

9-13 YEARS OLD

December – Water Treatment Plant Tour

Take a walking field trip to the Town of Normal water treatment plant to learn about where our water comes from and how we make sure it is safe for people to use.

Thursday, December 6, 9:30-11:30 a.m.
Friday, December 7, 9:30-11:30 a.m.

January: Wind Power

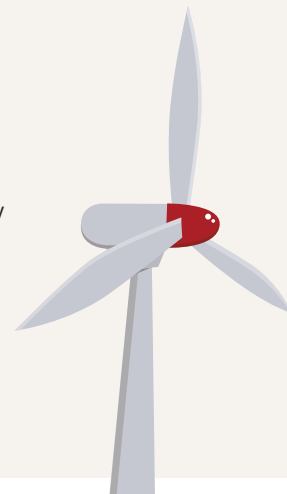
Explore how we get energy from wind and spend some time exploring our new ImagineAir Exhibit.

Thursday, January 10, 9:30-11:30 a.m.
Friday, January 11, 9:30-11:30 a.m.

February: The Nature of Science

What is scientific inquiry and how do you design your own experiments?

Thursday, February 7, 9:30-11:30 a.m.
Friday, February 8, 9:30-11:30 a.m.



Education Programs

ONLINE REGISTRATION NOW AVAILABLE!

Visit childrensdiscoverymuseum.net/205/Online-Registration

Members receive a \$5 discount on all programs. PLEASE NOTE: it may take up to 24 hours for member discounts to be available after you set up your online account.

Payment must accompany registration. Cancellation must be received at least three business days prior to the start of the program to receive refund. See more information about our programs on our website childrensdiscoverymuseum.net/31/Learning

KINDERGARTEN
thru
5TH GRADE

9:00 a.m.–5:00 p.m.

Cost:
\$40 Members
\$45 Non-Members
Pre-order an Avanti's lunch for \$5

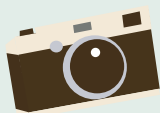


Discovery Day Camp offers children an opportunity to engage in STEAM based learning through play. Each day consists of play time in the classroom while students are arriving, themed activities, a 2-hour break in the middle of the day for lunch and museum exploration, more fun activities, snack and play time in the classroom during pick up.

Children may bring a sack lunch or purchase an Avanti's sack lunch for \$5.

Register at
ChildrensDiscoveryMuseum.net

- December 27: Architecture and Design**
- December 28: Earth and Space**
- January 2: Photography**
- January 3: Math in Art**
- January 4: The Physics of Tabletop Games**
- January 21: Winter STEM Challenges**
- February 18: Fabulous Forts**



Spring Break Dates Preview:

- March 25**
- March 26**
- March 27**
- March 28**
- March 29**



an initiative of the
 Institute of Museum and Library Services

At the Children's Discovery Museum in Normal, any Illinois family that qualifies for nutrition assistance and is in possession of an EBT card (Link WIC, Snap) can simply present your benefit card with a valid identification and receive an annual *Museums for All* pass.

Each visit, present your *Museums for All* pass at our front desk and receive \$3 admission for up to six people. (Children under 2 years old are free.) Plus receive discounts on education programming and events and access to Member Mondays.

Visit ChildrensDiscoveryMuseum.net for more information.



The CDM is an official drop off Holiday Collection location.

Make someone's holiday special and drop off a gift today!

BOOK SHOWERS FOR LITERACY

Taking donations of new books to include with holiday food baskets.

TOYS FOR TOTS

Collecting new toys for children up to age 12.

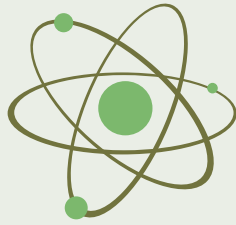
RECEIVE 10% OFF ANY HOLIDAY DRIVE PURCHASES IN THE MUSEUM STORE.

INNOVATION STATION

Lab and MakerSpace

Physics Days

Select Thursdays
10:00 a.m. - Noon



ISU Faculty, Dr. Jay Ansher and students will provide hands-on demonstrations, experiments and more on new topics each month!

Atoms and Molecules Thursday, December 6

Everything, everywhere, is made up of tiny objects called atoms. In just the last 120 years, scientists have begun to understand the tiny realm of atoms and molecules. The ISU Physics Club will be here with some hands-on activities that will shed some light on the bizarre world of the building-blocks of our universe.

Light and Color Thursday, January 31

Our eyes are the windows to our world, and the light that we see helps us make sense of what is around us. Come and explore light and color with the ISU Physics Club through hands-on activities. You'll see how light behaves, how a rainbow is formed, and meet the famous ROY G. BIV!



Magnetism Thursday, February 21

What makes a magnet a magnet?? Why are some stronger than others? Learn how magnets work, and how they can be used to help you find your way in the wilderness as well! Join the ISU Physics Club as they demonstrate the strange properties of magnetism on Physics Day!



Visit ChildrensDiscoveryMuseum.net for more program details.

INNOVATION STATION Lab and MakerSpace

MakerSpace
Thursday-Friday
10:00 a.m.-12:00 p.m.

Saturday-Sunday
2:00-4:00 p.m.

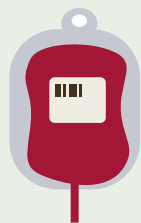
**Instructor-led
STEAM activities**
Saturdays
10:00 a.m.-12:00 p.m.

The Innovation Station is a place where children and families engage in STEAM (Science, Technology, Engineering, Art and Math) and where families create, discover, investigate and invent. The station gives everyone a chance to apply problem-solving skills, test and revise their ideas, collaborate, and have fun.

Visit us at cdmmakerspace.weebly.com for more information!



Elves' MakeShop
all month long!
December



**National Blood Donor
Month & National
Braille Literacy Month**
January



**Eat Ice Cream for
Breakfast Days &
National American
Heart Month**
February



Birthday Parties

Make it the most memorable party ever at the Children's Discovery Museum! Fun, easy and all the exhibits your kids (and grown-ups) love to play in.

What's included:

- 21 admissions (adults and children)
- 1 ½ hours in the Party Room
- Unlimited Museum exploration
- Special gift for the birthday child
- Memories to last a life-time
- "Birthday Buddy" CDM Staff Member ready to help
- Families are welcome to bring their own food, drink and decorations.

Cost:

\$155 Member/\$175 Non-Member

\$50 non-refundable deposit required for reservation

\$7/additional guest

\$15/additional birthday child

For best availability book at least 3 weeks in advance.

For more information or to reserve your party call 309-433-3455



Join us for the 14th annual Doctors in Concert, an evening of live music, great food, cash bar, silent auctions and more; Featuring the musical talents of local physicians playing classical and contemporary melodies on piano, violin, cello, guitar, or harmonica, this year's event will support the future Kids' Medical Exhibit.

TICKETS AVAILABLE IN LATE FEBRUARY

Saturday, April 13 – 6:00 pm

DoubleTree Hotel and
Conference Center, Bloomington

SATURDAY
**APRIL
13**

Pushcart Derby 2019

Saturday, June 15
8:00 a.m.-1:00 p.m.

Youth 3rd-8th grade

Cost: \$20/participant

Teams of 7-10 youth create their own pushcart during a 2-hour workshop led by ISU CeMaSt students and museum educators, then compete in the 3rd annual Pushcart Derby! All materials provided, each participant receives a free t-shirt and lunch!



SAVE
THE
DATE

REGISTRATION BEGINS APRIL 1



studio

Our art studio set-up now follows a TAB (Teaching Artistic Behavior) model, and offers five different media centers, books, and art starters to explore! These centers follow monthly themes. The Studio offers something for all ages and stages of art!

Art Studio Free Family Programming

Select Saturdays
10:00 a.m.–1:00 p.m.

Join us on select Saturdays from 10:00- 1:00 p.m. for FREE programming. Activities will focus on a specific media/process, art movement/artist, or STEAM topic.

December:
Blizzards in Winter

January:
Wind and Art

February:
Inspire Your Heart with Art

Free with pre-registration

BCAI Partner Programs

New

BCAI School of Arts is a local organization focused on dance, martial arts, and self-expression. Please join us for some fun family time as we explore these areas with this new program.

Hybrid Art Creation

Join us as we inspire outside the box thinking utilizing surroundings, memories and sciences. This three part program will flex your physical, mental and emotional muscles. Sign up for one or all three. When you participate in all three sessions you will receive a free semester of a single dance class at BCAI School of Arts.

Age: Children ages 6 and up and their adult

Dates:
Sunday, February 3
Sunday, February 10
Sunday, February 17

Time:
3:00–4:30 p.m.

Cost: Free with pre-registration

Free with pre-registration

Art Around You: Exploring Contemporary Art in the Community

Visit University Galleries and participate in a scavenger hunt to help you discover the style and media used to create works of art. Then return to the museum where you will explore these styles and media as you create your own art.

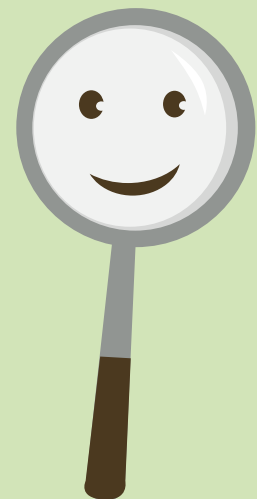
Age: 7-10 years old

Dates:
Saturday, January 12
Saturday, February 23
Saturday, March 16
Saturday, April 20
Saturday, May 11

Time:
1:00–4:00 p.m.

Cost: Free with pre-registration*

*Thanks to a generous grant from the IPCF Mirza Arts and Cultural Grant



Have you chosen a nonprofit to benefit from your online shopping with AmazonSmile yet? We know you have many passions and causes to support, but we hope the Christmas Season inspires you to support the power of play in our community. While shopping with Amazon, please use their special web address of smile.amazon.com and you can pick a local nonprofit to benefit from every purchase you make. To support our outreach, new exhibits, and scholarships for local children please choose the Town of Normal Children's Discovery Museum Foundation as your nonprofit of choice. You can change your nonprofit any time to spread the love — we're all about sharing! Whomever you choose, we hope you'll use the AmazonSmile system and put your money back into your community. We appreciate your consideration now and all year!

amazon smile

can brighten the season as you shop



Celebrating 25 Years of Play!



In 2019 the Children's Discovery Museum will mark 25 years of inspiring the love of learning through the power of play. Has it really been that long? The place doesn't feel a day over 15 you say? Well that's partly true because we only have been in Uptown Normal for 15 years. But before our arrival on East Beaufort Street, the museum's journey began with a group of dedicated volunteers, donors, and dreamers who started in a mall and quickly relocated to a historic warehouse in Bloomington. With the help of the Town of Normal and many community friends and donors, their vision grew into the Children's Discovery Museum we know and love today.

Since the first child walked through our doors in 1994, we have served almost 2.5 million visitors from Central Illinois and across the United States. If you can picture it, 2.5 million pennies stacked on top of each other would make a tower over two miles high. That's a lot of playful learners!

To mark this special year, the museum's staff, volunteers, members, and Foundation Board are looking forward to celebrating our history, reconnecting with old friends, marking new milestones, and getting ready for our next 25 years of hands-on learning and fun. We will share more details as plans take shape in 2019.

Keep an eye on this newsletter, our Facebook page and Twitter (@DiscoveryMuseum), and watch our website for exciting announcements and events for our 25th anniversary. We can't wait to celebrate with you! Thank you for supporting our mission and the millions of people who have played and learned together with us.

BREAKFAST ON THE BALCONY

Support from this year's Breakfast on the Balcony will provide scholarships for more than 200 youth to take part in camps, early childhood classes, and field trips with their school! Scholarship funding allows us to further our outreach initiatives that provide hands-on educational opportunities for at-risk children and youth in our community.

Fran and Ed Kaufmann of Normal, IL were the lucky raffle winners of this year's Breakfast on the Balcony on October 13. Their prize included breakfast for 20 guests on the museum balcony, a redbird's eye view of the ISU Homecoming Parade, 20 museum admission passes, and 6 tickets to the ISU Homecoming Football Game!

Thank you to Hy-Vee for providing breakfast for our Redbird Fans!



**THANK YOU!
MORE THAN 200 YOUTH
SCHOLARSHIPS FUNDED!**

Holiday and Private Rentals

The Holidays will be here before you know it. The Museum is the perfect place to host large family gatherings, corporate events, and special parties. We offer options for groups and budgets of every size, from private museum rentals to room rentals. Let our staff help you plan your next event. Catering and bar service options available upon request. Non-profit rates available.

Contact Clare at 309-433-3455 for more details and to make your reservation!



Foundation News

The Children's Discovery Museum works hard to educate and entertain new generations of learners. But, we can't do it alone! Our members and donors help us share our mission of inspiring the love of learning through the power of play to as many children as possible.

How can you help? Donate today at childrensdiscoverymuseum.net and

support our scholarship program for students to attend field trips and learning labs. You can sponsor a pushcart in our annual derby or buy tickets for "Doctors in Concert" every April. Attend a Family Fun Night or volunteer during the Medici Craft Beer and Jazz Festival that generously shares proceeds each summer.

The successful partnership with the

Town of Normal and CDM Foundation is responsible for the high quality experience visitors find inside our doors. The Town covers overhead costs for our award-winning building and professional staff. The Foundation is responsible for raising funds for exhibits through the CDM Pushcart Derby and other important events and programs.

CDM Foundation Board

Gina Mandros, President
Ben Harmon, Vice President
Marlene Dietz, Secretary
Mark Jontry, Treasurer

Patrick Bane
Carla Barnes
Caroline Halperin
Terry Ogunleye

Theresa Prosser
Paul Scharnett
Mitch Stebel

Thanks to our Donors

July 1 – October 31, 2018

Monica Adams
Anonymous
Avanti's Italian Restaurant
Nancy Baird
Leah Barstow
Anthony Benkse
Robert Berrelez
Sheri Bettis
Beverly Beyer
Kathleen Britnell
Angey & Josh Brown
Sheri Brownfield
Kim Bruninga
Sara Busing
Gwinn Campbell
Tammy & Danny Carcasson
Nan Carlson & Brenda Huber
Amy Clements
Cogs and Corsets
Commerce Bancshares Foundation
Shannon Cook
Doug Coomer
Carl Cortese
Jayme Coulter
Dominic Covelli
Cathy Cross

Debra & Don Cruise
Kevin Dean
Sherri DeLeonardis
McKenzi & Jason Dunn
Marilyn & Wayne Ericson
Kathy Etcheson
Eric Ferguson
Kim Fetterhoff
Frank Filipo
Gregory & Erin Fish
Eric Forsberg
Susan & Larry Frank
Katelynn & Jason Garman
Ryan & Nicholas Gillhouse
Golden K Club of Kiwanis
Natalia Haberny
Carol Hajek
Barbara Hankemeier
Kelli Harmon
Beth Heikkila
Sky Holland
M Hunter
Christine Kaufman
Charles Kim
Ruth & Gary Kuipers
Stacy Ledford
Todd Long

Mickey Lower
Jacquie Mace
Gina & David Mandros
Mel Manuel
Joyce & Kurt Moser
Network for Good
Nina & Michael Norris
Gina & Sean O'Brien
Shreyashi Pal
Peter Paulin
PNC Foundation
Theresa Prosser
Lesley & Paul Reeter
Elena & Philip Reuter
Olivia Reynolds
Carole & Jerry N. Ringer
Aidan Roseberry
Andrew Schwenk
Deb & Tim Sexton
Hunter Sheaffer
State Farm Companies Foundation
State Farm Insurance Companies
David Stevens
Phylis Versteegh
Laura Wall
Brenda Wells
Jane & Tim Zeltgert



did you know?

**Our first location
in 1994 was in
College Hills Mall.**

If you are interested in learning more about serving as a board member, please contact Executive Director Beth Whisman at bwhisman@normal.org or 309-433-3441.

The Children's Discovery Museum Foundation is a 501(c)3 nonprofit organization created to support the mission and vision of the Children's Discovery Museum, to raise and expend funds for the benefit of the Museum and to advocate on behalf of the Museum in the community at large.

Memory Making and Brain Building!



In our 25 years of growing and learning as a museum, we have had the honor of being among the first memory-making experiences for children and their loved ones in Central Illinois. How many young artists have happily posed for a photo while creating a masterpiece on our Paint Wall? How many families have snapped a selfie with Santa during Jammies & Jingles? Who remembers the first time their brave kid didn't need help navigating the Climber?

These memories are cherished, and the pictures are sweet. But what you can't see in those 25 years of photos is the most important part: Inspiring the love of learning through the power of play has helped build stronger brains and better futures for children across our community.

That's right! The fun our children have today as they play and learn is building the architecture of their brains. The Harvard University Center on the Developing Child reported this year, in the first years of a child's life more than 1 million new neural connections are formed every second. Specifically, the type of interactions children experience with parents and caregivers as they play creates the very foundation upon which all later learning, behavior, and health depend.

We need your generous support to reach a new generation of children with our early childhood education programs, exhibits, and field trips. While our strong partnership with the Town of Normal supports our building and operations, the Children's Discovery Museum

Foundation is responsible for securing funds for exhibits that make up the heart of the museum, as well as scholarships. That's where donors and friends like you make a difference!

As the year comes to a close and we prepare to celebrate our 25th year as a premier museum and early childhood education resource for the region, we ask you to give a gift that will have a lasting impact on children for years to come.

The Power of Play grows stronger with each child who gets to participate. And, the Love of Learning can be a lifetime habit if we inspire a child at every opportunity.

We look forward to your support and hope you'll remember us this holiday season. Thank you!

Support Our Mission

Here is my gift to support new exhibits and programs at the Children's Discovery Museum!

Name for recognition purposes: _____

Address: _____ City: _____ St: _____ Zip: _____

Phone: _____ Email: _____ Signature: _____

Make your gift online at ChildrensDiscoveryMuseum.net/163/Inspired-Giving

Please detach and return to:
Development, The Children's Discovery Museum
101 E. Beaufort Street, Normal, IL 61761



Day of Play

children's discovery museum

presented by PNC



The CDM hosted the largest Day of Play presented by PNC to date on September 29, 2018. Uptown Normal became a giant playground for kids and parents of all ages to explore a variety of free play activities. CDM Educators led STEAM challenges with “Let’s Do Chemistry,” and more than 60 community partners provided unique play experiences. A Touch-a-Truck experience allowed kids to see machinery, equipment, and emergency response vehicles from the driver’s seat. Kids played in the giant

sand box, learned about bike safety at the Bike Rodeo, and engineered their very own pushcart for the test track. The main stage featured high energy demonstrations and performances throughout the day with Walker’s Tae Kwon Do, BCAI student dance routines, and various WERQ routines for all to take part in. PNC provided kids the opportunity to meet Abby Cadabby, our special guest from Sesame Street! Day of Play embodies our mission of “Inspiring the love of learning through

the power of play.” The whole day is FREE and designed to provide opportunities for kids and parents to play and learn outside together! Thank you to our sponsors: PNC, Advocate BroMenn Medical Center, Afni, Inc., Culligan Water, Friends of the Constitution Trail, Advocate Charitable Foundation, Heartland Bank and Trust, and Radio Bloomington for making Day of Play possible.

**HUNDREDS
OF GIFTS!
SUCH AS:**

MAGNATILES

PLASMA CARS

**CRAZY ARRON'S
THINKING PUTTY**

GAMES

PUZZLES

MAD MATTER

SQUIGZ

GRAVITRAX

LUX BLOX

STEAM TOYS

PLUSH

PUPPETS

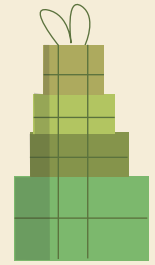
**LEARNING
RESOURCES**

KLUTZ

BOOKS

SCIENCE KITS

GREEN TOYS



20% off

Bring this coupon
to the Children's
Discovery Museum
Store and receive
20% off your entire
purchase!

Offer valid through
December 31, 2018

children's
discovery
museum

**CDM Store is the place
for holiday shopping!**

We always provide free gift wrapping!

Museum Membership



Basic Membership (\$95)

Unlimited general admission for two adults and all children under 18 living in the same household.

With additional discounts on programs, birthday parties, and Discover More Store.

PLUS Family Membership (\$130)

Basic Member Benefits, PLUS...

One free guest admission each visit to CDM
FREE or 1/2 price admission at over 500 participating ACM and ASTC Museums

Grandparent Membership (\$125)

Unlimited general admission for grandparents and their grandchildren.

Basic membership benefits, PLUS...

One free guest admission each visit to CDM
FREE or 1/2 price admission at over 500 participating ACM and ASTC Museums

For more information contact Shelly Hanover
(309) 433-3453 or shanover@normal.org

Don't forget-PLUS and Grandparent Members receive free or 1/2 price admission to over 500 museum's across the country.

Show your Membership card at participating museum's in Chicago, St. Louis, New York, Los Angeles, and Orlando for great discounts and hands-on fun!

Visit ChildrensDiscoveryMuseum.net for a complete listing of participating museums.

Membership Cards

Please present your Museum Membership card to the front desk staff to receive your free admission benefits, discounts in the Discover More Store and savings on birthday parties and programs. Members without cards may be charged a \$5 replacement fee.



SENSORY BAGS AVAILABLE

The Children's Discovery Museum is proud to announce we now have "Sensory Bags" available for check out at the front desk. Generously provided by Autism McLean, these bags include noise reduction headphones, communication tools, sunglasses, and therapeutic toys. If your child could benefit from using these items during their time at the museum, please ask the front desk for a Sensory Bag during your next visit. Check our website for upcoming sensory friendly events!



**SAT. NOV 24
FREE**

**SAT. DEC 1
FREE**

**SAT. DEC 8
FREE**

**SAT. DEC 15
FREE**

**SAT. DEC 22
FREE**



**SAT. DEC 1
SANTA ARRIVES
IN UPTOWN
12:30PM PARADE**

**SAT. DEC 1
1-4PM**

**SUN. DEC 16
12-3:30PM**

**SUN. DEC 2
1-3:30PM**

**WED. DEC 19
5-7:30PM**

**FRI. DEC 7
12-2:30PM**

**THU. DEC 20
5-7:30PM**

**SAT. DEC 8
11AM-4:30PM**
sponsored by NAACP

**FRI. DEC 21
5-7:30PM**

**SUN. DEC 9
1-3:30PM**
sponsored by NAACP

**SAT. DEC 22
5-7:30PM**

**FRI. DEC 14
5-7:30PM**

**SUN. DEC 23
12-3:30PM**

**SAT. DEC 15
11AM-4:30PM**

**MON. DEC 24
12:30-2:30PM**



**SANTA'S
STATION
UPTOWN NORMAL**

MUSEUM HOURS

Monday: 9:00 a.m.–Noon (Members Only)

Tuesday: 9:00 a.m.–5:00 p.m.

Wednesday: 9:00 a.m.–5:00 p.m.

Thursday: 9:00 a.m.–8:00 p.m.

Friday: 9:00 a.m.–5:00 p.m.

Saturday: 9:00 a.m.–5:00 p.m.

Sunday: 1:00–5:00 p.m.

SPECIAL HOURS:

Monday, December 24: Closed

Tuesday, December 25: Closed

Monday, December 31: 9:00 a.m.–3:00 p.m. (Noon Year's Eve Party!)

Tuesday, January 1: Closed

Thursday, February 7: 8:30 a.m.–2:30 p.m.

Phone: 309-433-3444

Web: ChildrensDiscoveryMuseum.net

Admission is \$7 per person ages 2 and above



Search for "Children's
Discovery Museum Normal"



Search for @DiscoveryMuseum

 [YouTube.com/ChildrensDiscoveryMuseumNormalIL](https://www.youtube.com/ChildrensDiscoveryMuseumNormalIL)



Noon Year's Eve:

Can't stay up 'til midnight? The CDM's got you covered! Countdown to Noon with a confetti blast, face painting and noisemakers! Enjoy crafts and activities for all ages too! Don't miss this family tradition as you ring in the New Year!

Children must be accompanied by a paying adult.

Date: Monday, December 31

Time: 9 a.m. – 3 p.m.

Cost: \$2 members
\$9 non-members

Register at
ChildrensDiscoveryMuseum.net
for express entry.